

# THE COMMODORE PERRY REGIONAL TRAIL

## DRAFT

***A Multi-Municipal Collaboration***



Pine Township. Marshall Township. Adams Township. Cranberry Township. Jackson Township.

**2017**



## PLANNERS IN ACTION

### **PINE TOWNSHIP**

Larry Kurpakus, Director of Code Administration  
and Land Development

### **MARSHALL TOWNSHIP**

William Campbell, MTMSA Manager and  
GIS Coordinator  
Heather Cuyler, Recreation Program Director (*previous*)  
Jessica Drozd, Recreation Program Director (*current*)  
Nicole Hanson, Planning Director

### **ADAMS TOWNSHIP**

Gary Peaco, Code Enforcement Officer  
Haley Geyer, Park Director

### **CRANBERRY TOWNSHIP**

Ron Henshaw, Director of Planning and  
Development Services  
Chelsea Puff, Manager, Business and  
Economic Development  
Kathleen McCaig, Planning Specialist  
Doug Cloutier, GIS Administrator

### **JACKSON TOWNSHIP**

Chris Rearick, Township Manager/Planning Director  
Ashley Hazlett, Office Administrator/Assistant Programmer

RESOLUTION

## **PINE TOWNSHIP BOARD OF SUPERVISORS**

Michael J. Dennehy, Jr., Chairman  
Philip D. Henry, Vice Chairman  
Edward Holdcroft  
Pasquale D. Avolio  
Frank J. Spagnolo

### **PLANNING COMMISSION**

Michael Hansen, Chairman  
Joel Dennison, Vice Chairman  
John Lombardo  
Lauren R. Parker  
Renee Evans  
R. Jeffery McGeary  
Garrin Welter

### **STAFF**

Scott D. Anderson, Township Manager  
Larry Kurpakus, Director of Code Administration and Land Development  
Joni Patsko, Parks and Recreation Director

## **ADAMS TOWNSHIP BOARD OF SUPERVISORS**

Donald C. Aiken, Chairman  
Thomas L. Franceschina, Vice Chairman  
Linda E. Lees  
Edward L. Vogel  
Russel R. Ford

### **PLANNING COMMISSION**

Liz McMeekin  
Robert Downie  
Thomas L. Franceschina  
Brett Schultz  
Martin McKinney  
Marilyn Watson  
Steve Madeja

### **STAFF**

Janet Lubbert, Secretary  
Gary Peaco, Code Enforcement Officer  
Haley Geyer, Park Director

## **CRANBERRY TOWNSHIP BOARD OF SUPERVISORS**

Dick Hadley, Chairman  
Mike Manipole, Vice Chairman  
Bruce Hezlep  
Bruce Mazzoni  
John Skorupan

### **PLANNING ADVISORY COMMISSION**

James Colella, Chairman  
Susan Rusnak, Vice Chairman  
Sharon Beck  
William Thompson  
John T. Morgan

## **MARSHALL TOWNSHIP BOARD OF SUPERVISORS**

Thomas Madigan, Chairman  
Philip Troy, Vice Chairman  
Jason Bragunier  
Robert Edwards  
Anthony Candek

### **PLANNING COMMISSION**

Jeff Davison, Chairman  
Ron Baling, Vice Chairman  
Elaine Hatfield  
Todd Shaffer  
Larry Payne  
Kim Herbert  
David Pampena

### **STAFF**

Neil D. McFadden, Township Manager  
William Campbell, MTMSA Manager and GIS Coordinator  
Heather Cuyler, Recreation Program Director (*previous*)  
Jessica Drozd, Recreation Program Director (*current*)  
Nicole Hanson, Planning Director

## **JACKSON TOWNSHIP BOARD OF SUPERVISORS**

Trent Geis, Chairman  
Allan Osterwise, Vice Chairman  
Jay Grinnell

### **PLANNING COMMISSION**

Ed Komorosky, Chairman  
Dennis Morgan  
Jeff Barkley  
George Hawthorne  
Chris Duncan  
Kurt Fowler  
Marianne Hall

### **STAFF**

Chris Rearick, Township Manager/Planning Director  
Ashley Hazlett, Office Administrator/Assistant Programmer  
Nikki Colton, Planner/Zoning Officer

### **STAFF**

Jerry Andree, Township Manager  
Bettelou Bertoncello, Assistant Township Manager, Administration  
Duane McKee, Assistant Township Manager, Operations  
Ron Henshaw, Director of Planning and Development Services  
Chelsea Puff, Manager, Business and Economic Development  
Kathleen McCaig, Planning Specialist  
Doug Cloutier, GIS Administrator

<b>INTRODUCTION</b>	6-7
<b>A REGIONAL VISION</b>	8-11
<b>THE COMMUNITIES</b>	12-22
Township of Pine	13-14
Marshall Township	15-16
Adams Township	17-18
Cranberry Township	19-20
Jackson Township	21-22
<b>NEXT STEPS</b>	23
<b>APPENDIX</b>	
Projects List	25



# INTRODUCTION



## **Connecting Communities.**

Effective regional planning addresses the needs of the present while looking toward the possibilities of the future. It is forward-thinking, innovative, and collaborative. It looks at the bigger picture, without being constrained by municipal borders or county boundaries.

The Townships of Adams, Cranberry, Jackson, Marshall, and Pine, each are actively working to enhance and expand their sidewalk and trail networks. The intention behind these efforts is to create connections between people and key places - parks, schools, neighborhoods, and commercial areas.

With each municipality working on similar goals within their own borders, a task force, entitled “Planners in Action,” was formed in 2016 to facilitate the exchange of ideas and open lines of communication. Through those discussions, an idea was formed. An idea to plan together. To work together. To outline a vision for a regional active transportation network that, at the time, did not exist. By opening the lines of communication, and discussing the interests and shared goals of each municipality, a coordinated effort was undertaken to chart a path forward.

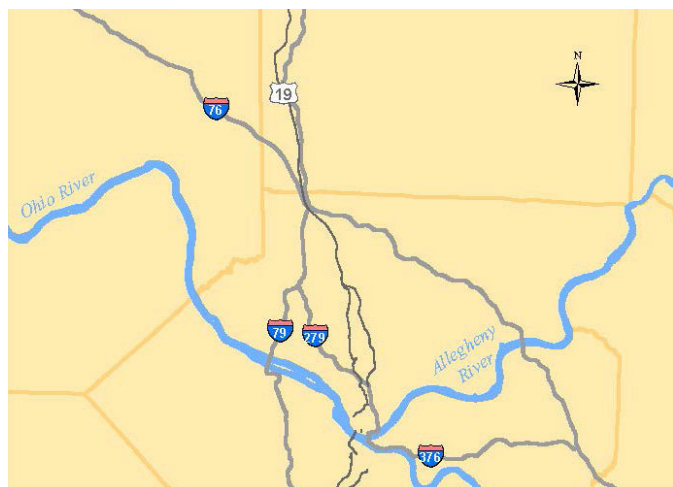
## **People. Places. Paths.**

Western Pennsylvania is home to a variety of recreational amenities, including regionally significant trails such as the North Country Trail, Industrial Heartlands Trail, The Rachel Carson Trail, regional parks, and bodies of water. The participating municipalities provide exceptional community parks and recreational services to their residents. However, none of these amenities are connected, despite being in close proximity to each other.

The following plan highlights the existing sidewalk and trail networks of Pine, Marshall, Adams, Cranberry, and Jackson Townships, and the links needed to create a regional route – a hybrid of sidewalks and trails – between them. This route will provide an immediate benefit to each community, by creating connections to local destinations. Over time, the successful implementation of this vision will create a network of sidewalks and trails that link to amenities, both local and regional, across Western Pennsylvania.

# The Commodore Perry Regional Trail.

This new, inter-county and multi-municipal trail system is named the Commodore Perry Regional Trail (CPRT) for two factors. The name serves as a remembrance of a prominent figure in the region and history of the United States Navy – Commodore Oliver Hazard Perry. Additionally, the path of the CPRT is primarily north-south, paralleling a major transportation corridor in Western Pennsylvania. This corridor, typically referred to as Route 19, is also known by another name – Perry Highway. Route 19 traverses through many of the Planner in Action communities, extending as far north as Erie, Pennsylvania



*Perry Highway (Route 19) in Allegheny and Butler Counties*



*Perry Highway between Marshall and Pine Townships.*

Commodore Oliver Hazard Perry is largely known for his vital role during the War of 1812. A lifelong military man, Perry was stationed at Presque Isle on Lake Erie at the beginning of the war. Upon arriving to the Great Lakes, Perry was faced with the challenge of overcoming depleted resources, including ships, men, and weapons. In response, Perry promptly went about rebuilding the fleet and assembling a new naval unit.

In September of 1813, Perry and his crew took on the British in the Battle of Lake Erie. Their victory marked a turning point in the war for the United States, and earned Perry the title “The Hero of Lake Erie.”



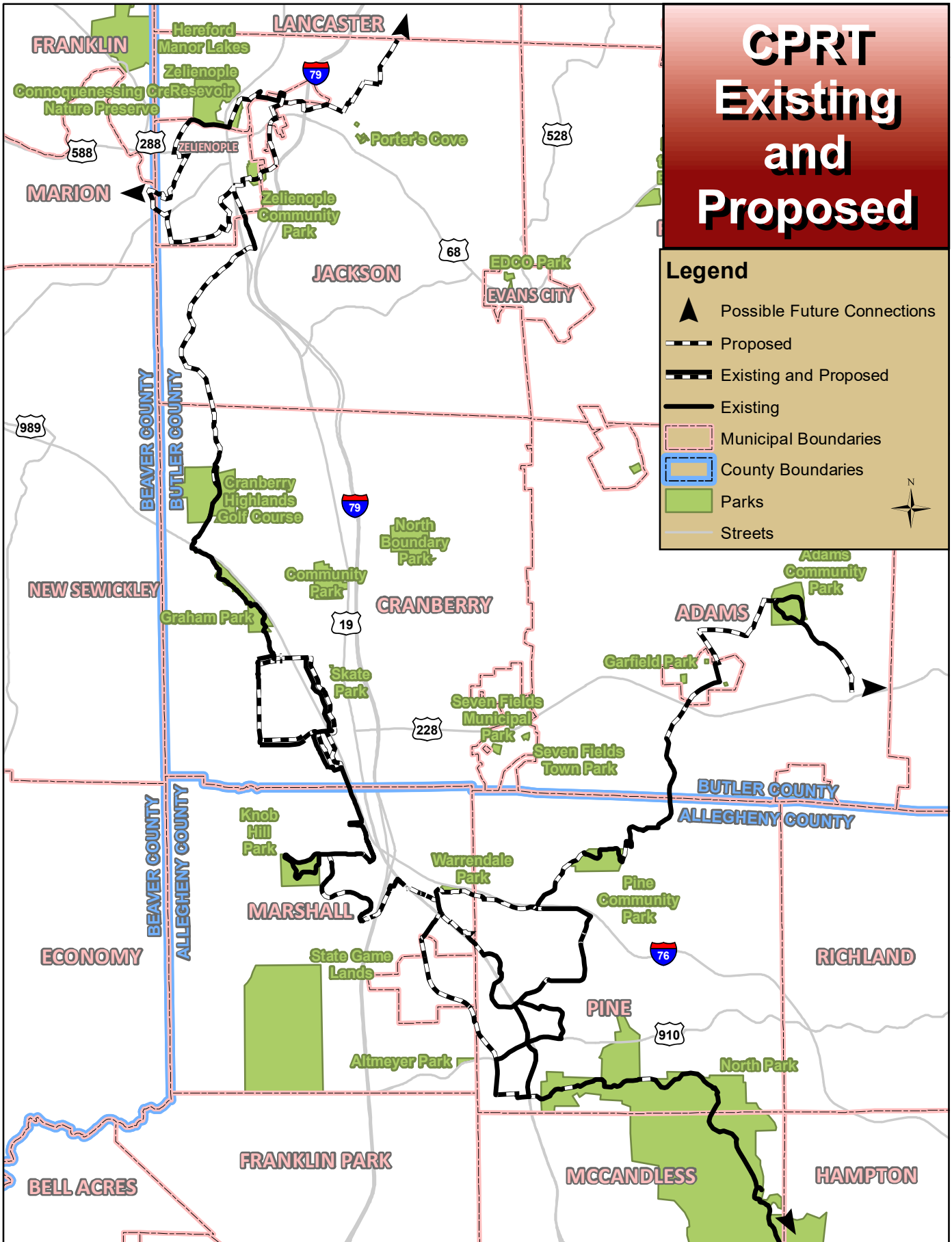


# **A REGIONAL VISION**

# CPRT Existing and Proposed

## Legend

- ▲ Possible Future Connections
- Proposed
- Existing and Proposed
- Existing
- Municipal Boundaries
- County Boundaries
- Parks
- Streets



The Commodore Perry Regional Trail (CPRT) Master Plan will further the development of a more complete and connected active transportation network in the region. The trail spans between two counties in Western Pennsylvania - Allegheny County and Butler County. The route crosses the municipal boundaries of Jackson Township, Cranberry Township, Adams Township, Marshall Township, and Pine Township.

When complete, The Commodore Perry Regional Trail will be over 50 miles in length. This route will consist of trails, sidewalks, and in-road facilities such as pedestrian lanes, sharrows, and bike lanes. This trail will serve as a spine in which ancillary sidewalks, trails, and bikeways, can connect. The secondary trail system outlined in this master plan will exceed 33 miles in length, with further expansion opportunities in the future. To the greatest extent possible, The Commodore Perry Trail will maximize the use of existing infrastructure, in order to accelerate the development of an interconnected corridor in an efficient manner.

The Commodore Perry Regional Trail highlights the exceptional community parks found in the different municipalities. The trail system connects five municipal parks, totaling 740 acres of local, community green space. Through the development of this trail, Adams Community Park, Graham Park, Knob Hill Park, Pine Community Park, and Zelienople Community Park will be linked together. Access by foot or bike to commercial nodes within each community, such as downtown Zelienople, Freedom Square, and the Village at Pine, will also be possible as the gaps along The Commodore Perry Regional Trail are filled.

This route provides the opportunity to access regionally significant amenities, including Brush Creek, the over 3,000 acres of green space located in North Park, and the Rachel Carson Trail, totaling 34 miles in length.



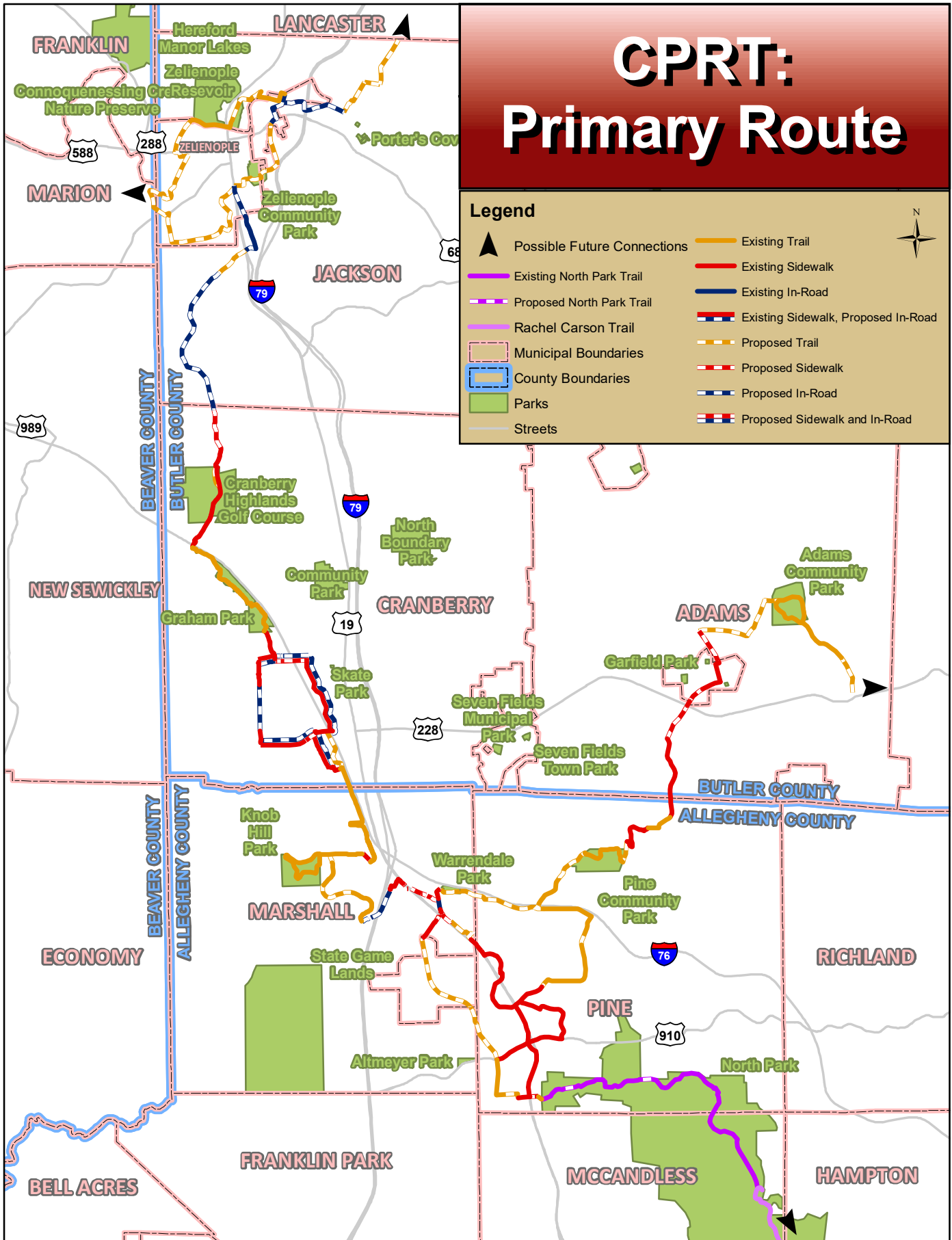
### **THE COMMODORE PERRY REGIONAL TRAIL (CPRT)**

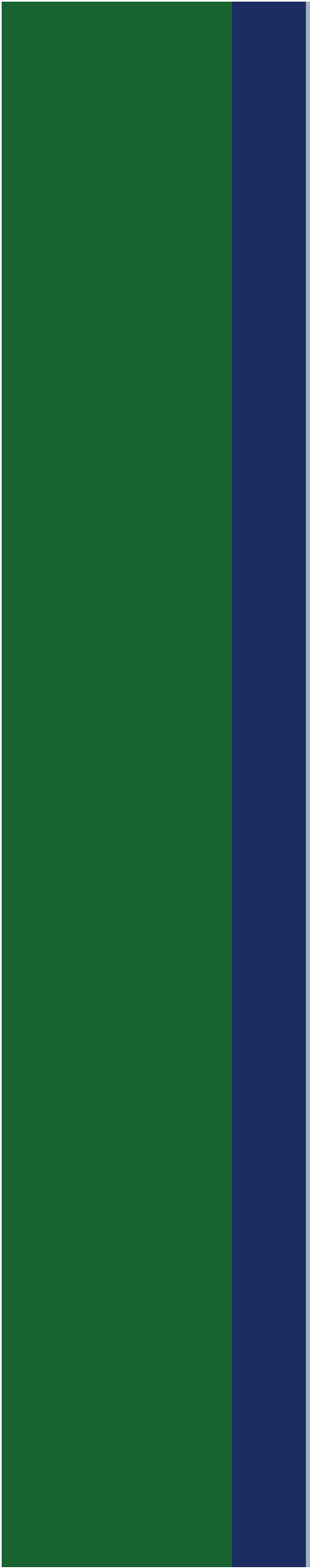
- *57 miles of trail*
- *3,815 acres of green space*

# CPRT: Primary Route

## Legend

-  Possible Future Connections
-  Existing Trail
-  Existing Sidewalk
-  Existing In-Road
-  Proposed Trail
-  Proposed Sidewalk
-  Proposed In-Road
-  Proposed Sidewalk and In-Road
-  Municipal Boundaries
-  County Boundaries
-  Parks
-  Streets





The projects outlined in this plan are divided into two categories. The Commodore Perry Regional Trail serves as the major spine, or primary network, that will connect communities and recreational amenities with each other. The CPRT consists of existing trails and sidewalks, as well as “missing links” or proposed projects. These future projects range from trails and sidewalks to in-road facilities such as bike lanes and paved shoulders (See Appendix for additional information). As this plan is implemented, constructing projects along the path of the CPRT will be the primary objective for the associated municipalities.

In order to prioritize those trails, sidewalks, and bike lanes, each participating municipality identified the challenges and opportunities associated with each project. Each community brought forth the vision and goals for active transportation in those municipalities, as outlined in plans, policies, outreach, and programs to promote active transportation. Current township projects and upcoming developments that could contribute infrastructure to the CPRT were assessed. This comprehensive approach harnesses the ongoing development in the region, and combines it with an outline of community initiated trail improvements, to establish a path forward.

A secondary network of routes that extend from the CPRT spine are also identified in this plan. The establishment a series of smaller pathways that are ancillary to the CPRT will enable additional neighborhoods and commercial areas to be connected into this regional trail network.

The regular implementation of the project outlined in this plan will result in the creation of a regionally significant trail network where none currently exists. As elements of the CPRT are constructed in the future, it will be beneficial for the communities to communicate about the status of project implementation. As projects are built in one municipality, that may have an impact and elevate the prioritization of a different project in a neighboring township.

Completing the routes will result in complete streets that enable people to walk or bike to shops, restaurants, schools, and offices without using a car. People will be able to access local and regional destinations for the purposes of recreation. The existing sidewalk, trail, and bikeway networks will improve and expand, connecting across municipal boundaries and county borders, ultimately providing access to locally and regionally significant amenities.

# Secondary Route

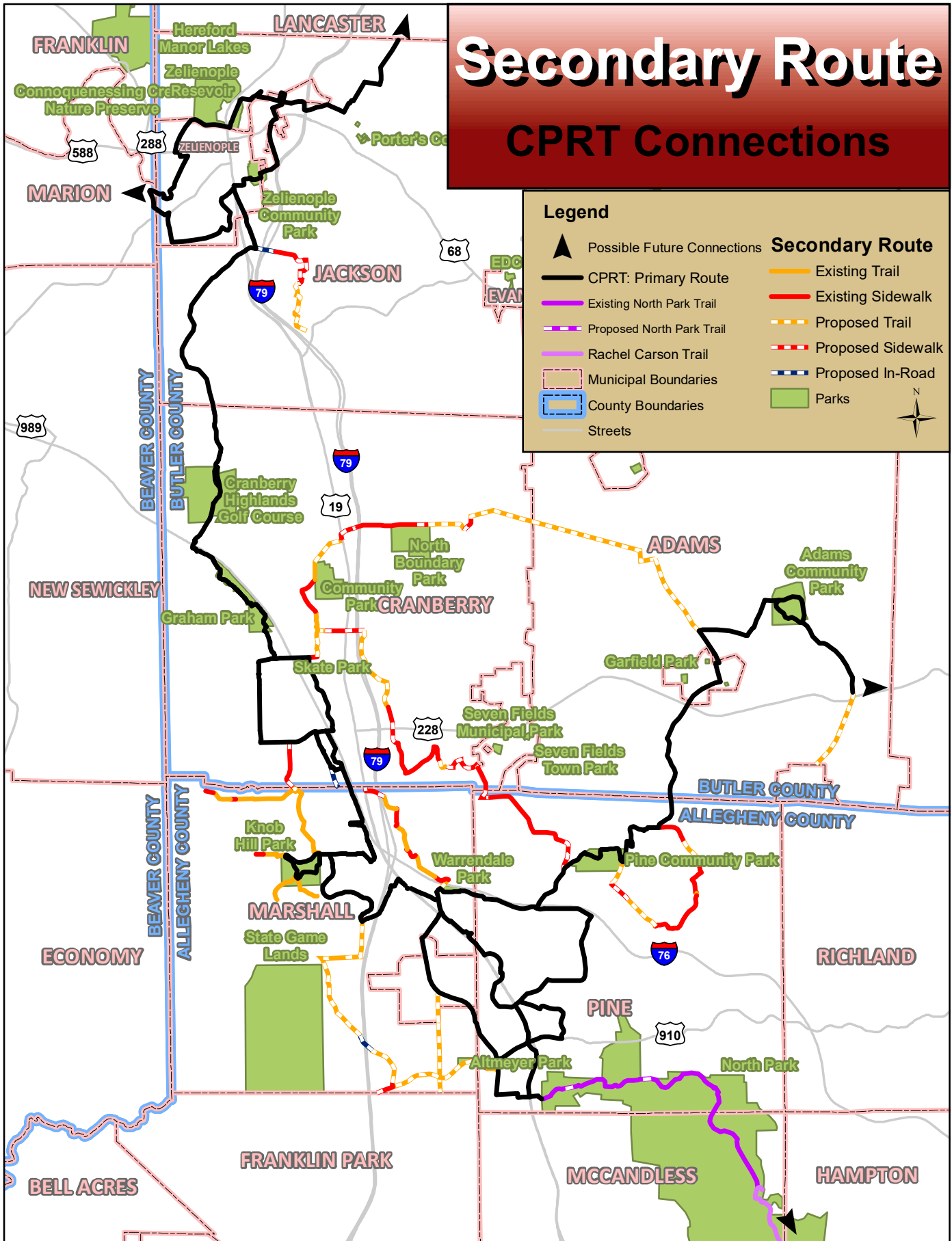
## CPRT Connections

### Legend

- ▲ Possible Future Connections
- CPRT: Primary Route
- Existing North Park Trail
- Proposed North Park Trail
- Rachel Carson Trail
- ▭ Municipal Boundaries
- ▭ County Boundaries
- Streets

### Secondary Route

- Existing Trail
- Existing Sidewalk
- Proposed Trail
- Proposed Sidewalk
- Proposed In-Road
- ▭ Parks





## **THE COMMUNITIES**

# Township of Pine, Allegheny County



Pine Township, located in Allegheny County, is called home by 12,937 residents. The Township has variety of recreational, residential, and commercial destinations, including the Village at Pine, the Pine Community Park and Municipal Center, the Treesdale Golf and Country Club, schools, and neighborhoods.

In 2005, the Township adopted the Trail Feasibility Study, in support of growing its trail system. In order to continue planning for the community's future, Pine Township developed and adopted the Implementable Comprehensive Plan and Comprehensive Parks, Recreation, and Open Space Plan in 2016. That plan emphasizes that "the Township of Pine supports and encourages human-powered transportation; affords residents opportunities for recreation and fitness activities; and creates connections between key locations within and beyond the township by providing safe routes for walkers and cyclists."

By filling in the gaps in its sidewalk and trail network along the Commodore Perry Regional Trail, Pine Township will develop a robust pedestrian corridor that provides access to Pine Community Park. The Township's proximity to North Park will also provide access to a regional recreation destination for all the municipalities linked together by the Commodore Perry Regional Trail.

## **CPRT**

**9.7 miles of completed  
sidewalks and trails**

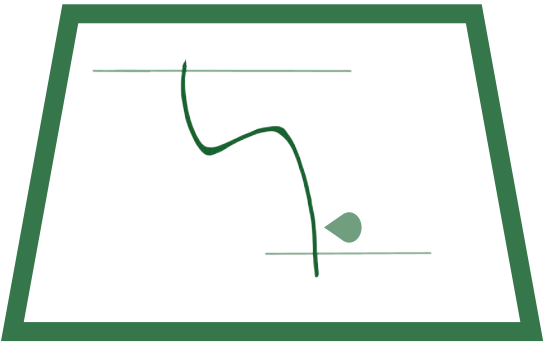
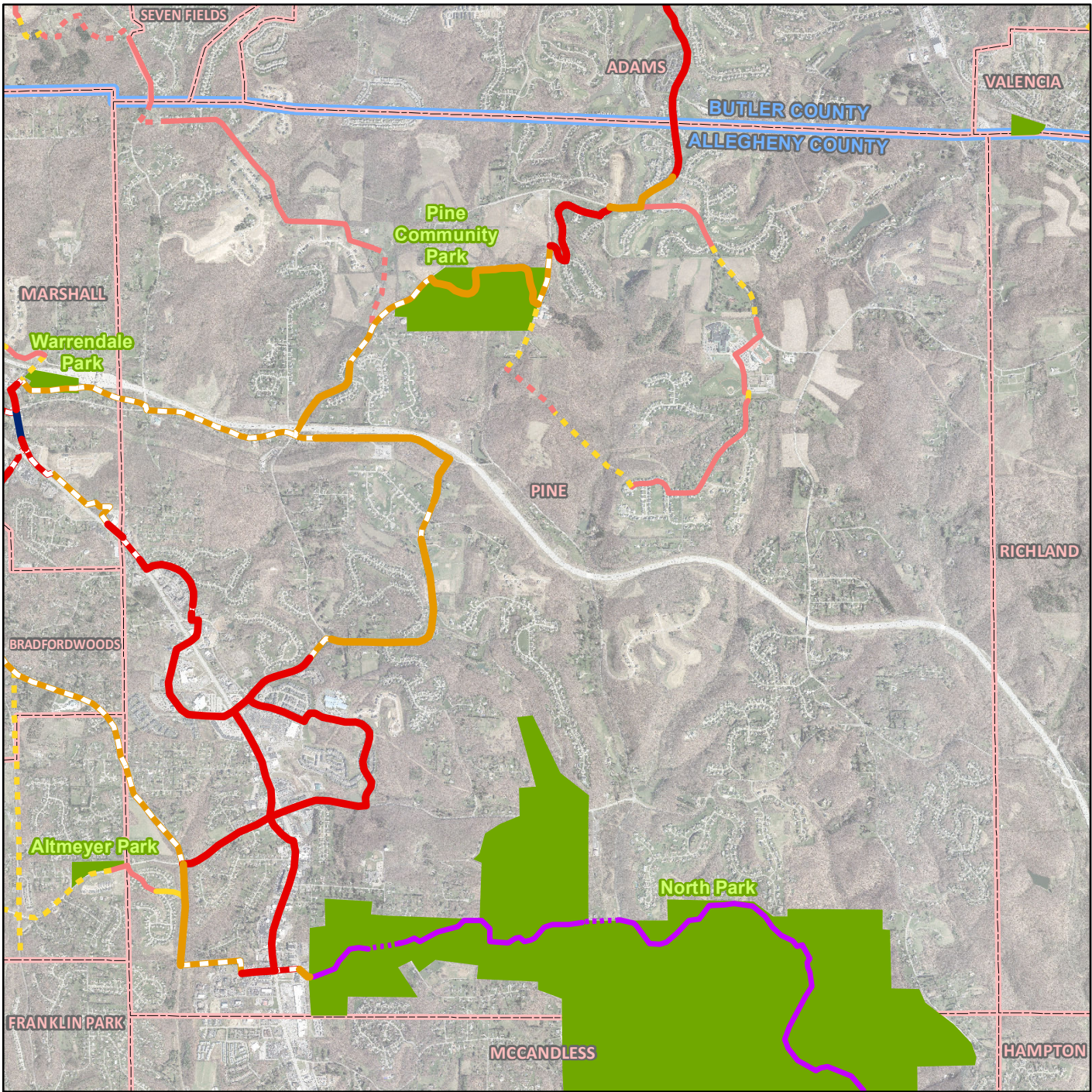
**3.4 miles of new  
sidewalks and trails**

## **SECONDARY**

**3.4 miles of completed  
sidewalks and trails**

**2.2 miles of new  
sidewalks and trails**

REGIONAL TRAIL CONCEPT: TOWNSHIP OF PINE



**Legend**

**Primary Route**

- Existing Trail
- Existing Sidewalk
- Existing In-Road
- Existing Sidewalk, Proposed In-Road
- Proposed Trail
- Proposed Sidewalk
- Proposed In-Road
- Proposed Sidewalk and In-Road
- Other Proposed

**Secondary Route**

- Existing, Sidewalk
- Existing, Trail
- Existing, In-Road
- Proposed, Sidewalk
- Proposed, Trail
- Proposed, In-Road
- Rachel Carson Trail
- Existing North Park Trail
- Proposed North Park Trail
- Parks
- Municipal Boundaries
- County Boundaries

# Marshall Township, Allegheny County



Marshall Township, located in Allegheny County, is called home by 8,823 residents. The Township has a variety recreational destinations including the Brush Creek Trail, Knob Hill Park, Warrendale Park, and the State Game Lands. The Township has a growing sidewalk and trail network due to new development and the implementation of capital projects.

In 2009, the Township adopted its Comprehensive Recreation, Parks, and Open Space Plan. That plan highlights the importance of continuing to explore multi-municipal opportunities for parks and recreation, continuing to expand the Township's trail system, as well as establishing a pedestrian network throughout the Township, and exploring the feasibility of adding bike lanes to Township roads.

The development of The Commodore Perry Regional Trail aligns with those goals. Marshall Township's recreation amenities, commercial nodes, and residential areas will become more connected and accessible as the sidewalks and trails along The Commodore Perry Regional Trail system are constructed.

## **CPRT**

**5.2 miles of completed  
sidewalks, trails, and in-  
road facilities**

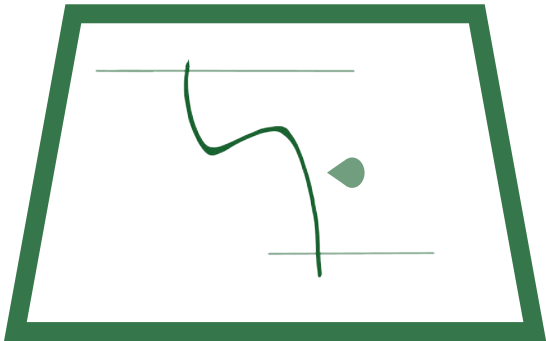
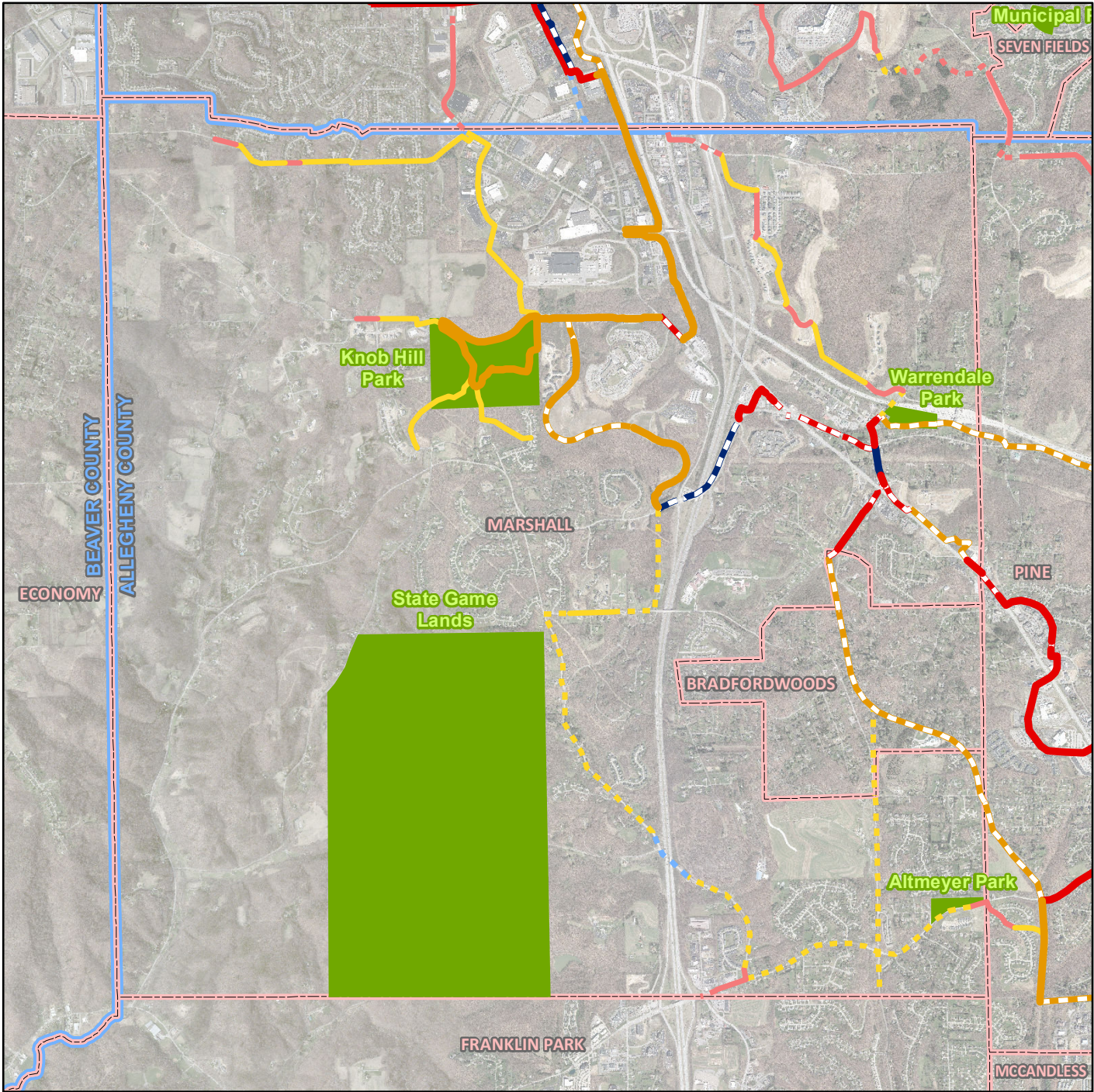
**3.6 miles of new  
sidewalks, trails, and in-  
road facilities**

## **SECONDARY**

**5.8 miles of completed  
sidewalks, trails, and in-  
road facilities**

**5.8 miles of new  
sidewalks, trails, and in-  
road facilities**

# REGIONAL TRAIL CONCEPT: MARSHALL TOWNSHIP



**Legend**

**Primary Route**

Existing Trail

Existing Sidewalk

Existing In-Road

Existing Sidewalk, Proposed In-Road

Proposed Trail

Proposed Sidewalk

Proposed In-Road

Proposed Sidewalk and In-Road

Other Proposed

**Secondary Route**

Existing, Sidewalk

Existing, Trail

Existing, In-Road

Proposed, Sidewalk

Proposed, Trail

Proposed, In-Road

Rachel Carson Trail

Existing North Park Trail

Proposed North Park Trail

Parks

Municipal Boundaries

County Boundaries

The Commodore Perry Regional Trail

19

# Adams Township, Butler County



Adams Township, located in Butler County, is called home by 13,546 residents. The Township has a variety of destinations that would benefit from enhanced pedestrian connections. From the Adams Township Community Park and Municipal Building, to neighborhoods, commercial areas, and schools like the Mars Area Elementary, Middle, and High Schools, locations abound for people to walk to.

The development of the sidewalk and trail projects within Adams Township and along The Commodore Perry Regional Trail will enhance the walkability of the community, and provide opportunities to walk as a form of transportation or recreation.

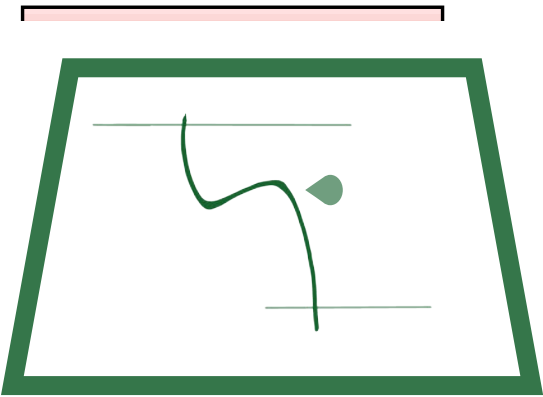
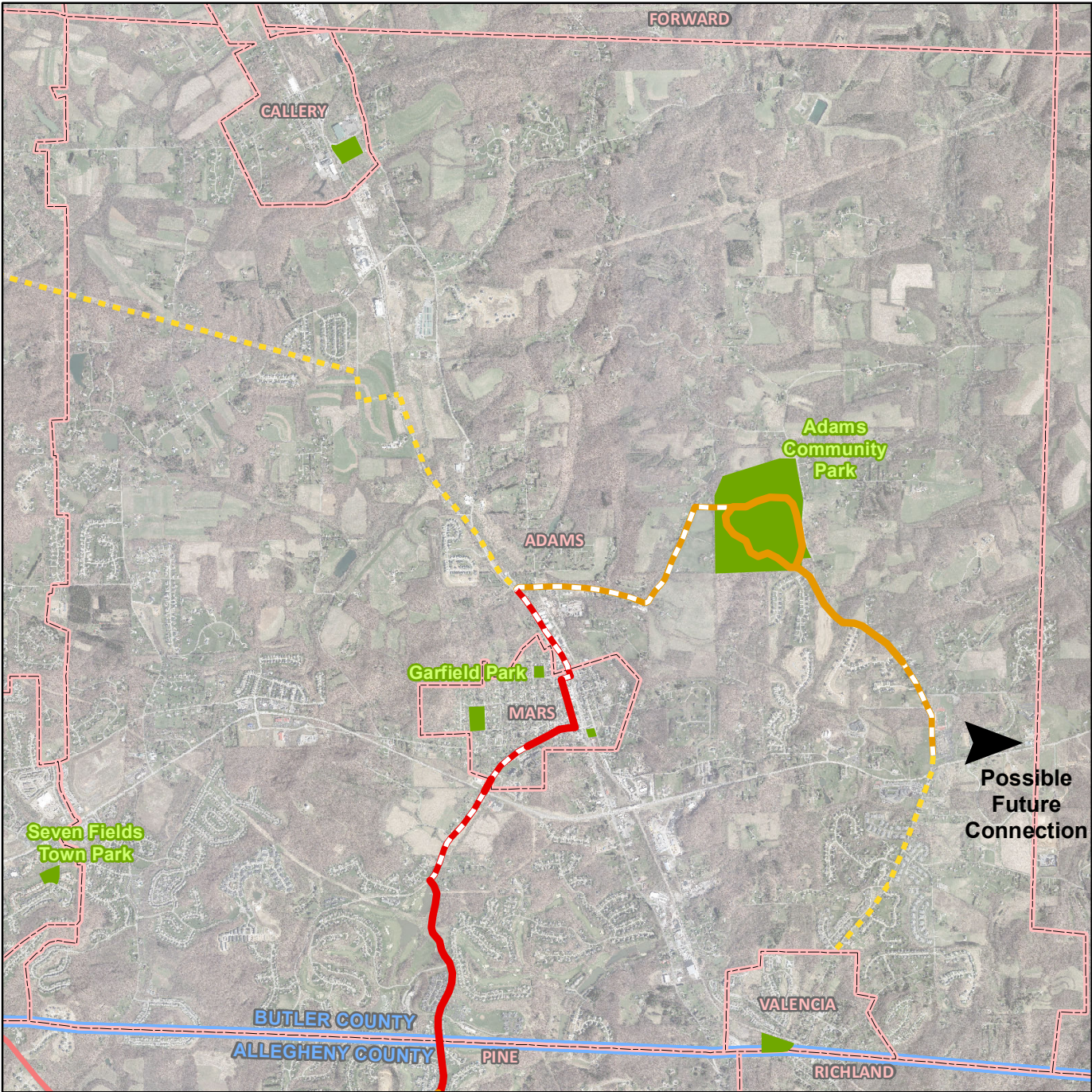
The Commodore Perry Regional Trail system also provides an opportunity to create future connections east of Adams Township. As new transportation and development projects trail or sidewalk projects have the ability to link people to key destinations in Adams Township, Middlesex Township, and along the Route 228 corridor, including recreational destinations, schools, commercial areas, and neighborhoods.

**CPRT**  
2.8 miles of completed  
sidewalks and trails

2.8 miles of new  
sidewalks and trails

**SECONDARY**  
4.0 miles of new sidewalks  
and trails

REGIONAL TRAIL CONCEPT: ADAMS TOWNSHIP



**Legend**

Possible Future Connections

**Primary Route**

- Existing Trail
- Existing Sidewalk
- Existing In-Road
- Existing Sidewalk, Proposed In-Road
- Proposed Trail
- Proposed Sidewalk
- Proposed In-Road
- Proposed Sidewalk and In-Road
- Other Proposed

**Secondary Route**

- Existing, Sidewalk
- Existing, Trail
- Existing, In-Road
- Proposed, Sidewalk
- Proposed, Trail
- Proposed, In-Road
- Rachel Carson Trail
- Existing North Park Trail
- Proposed North Park Trail
- Parks
- Municipal Boundaries
- County Boundaries

# Cranberry Township, Butler County



Cranberry Township, located in Butler County, is home to 30,739 residents and 24,000 jobs. The Township has a range of residential, recreational, and commercial destinations, including Graham Park, the Cranberry Highlands Golf Course, Community Park, the Municipal Center, North Boundary Park, Haine Elementary and Middle School, Rowan Elementary School, Freedom Square, Cranberry Springs, and Cranberry Mall.

An interconnected network of sidewalks, trails, and bikeways is a high priority for the Township. Previous planning efforts, including the development of The Cranberry Plan (2009), The Bicyclist and Pedestrian Connections Plan (2011), The Comprehensive Recreation and Open Space Plan (2012), and The Cranberry Plan Update (2016), all emphasize the importance of providing mobility options for residents and businesses. Key goals outlined in those plans include developing pedestrian connections between neighborhoods, creating routes between Graham Park, Community Park, North Boundary Park, and the surrounding neighborhoods, building additional trails, and providing access to key commercial areas.

By filling in the gaps in its sidewalk, trail, and bikeway network along the Commodore Perry Regional Trail, Cranberry Township will support the objectives outlined in these plans while providing access to local amenities through the development of multimodal corridors.

## **CPRT**

**7.1 miles of completed  
sidewalks, trails,  
and in-road facilities**

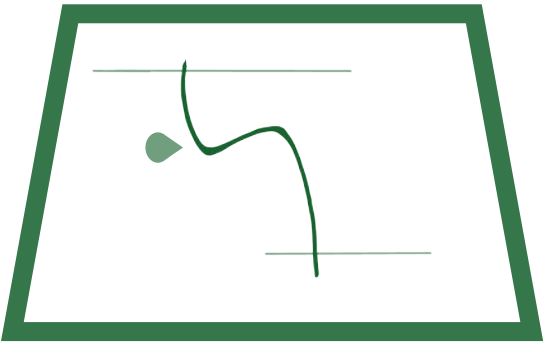
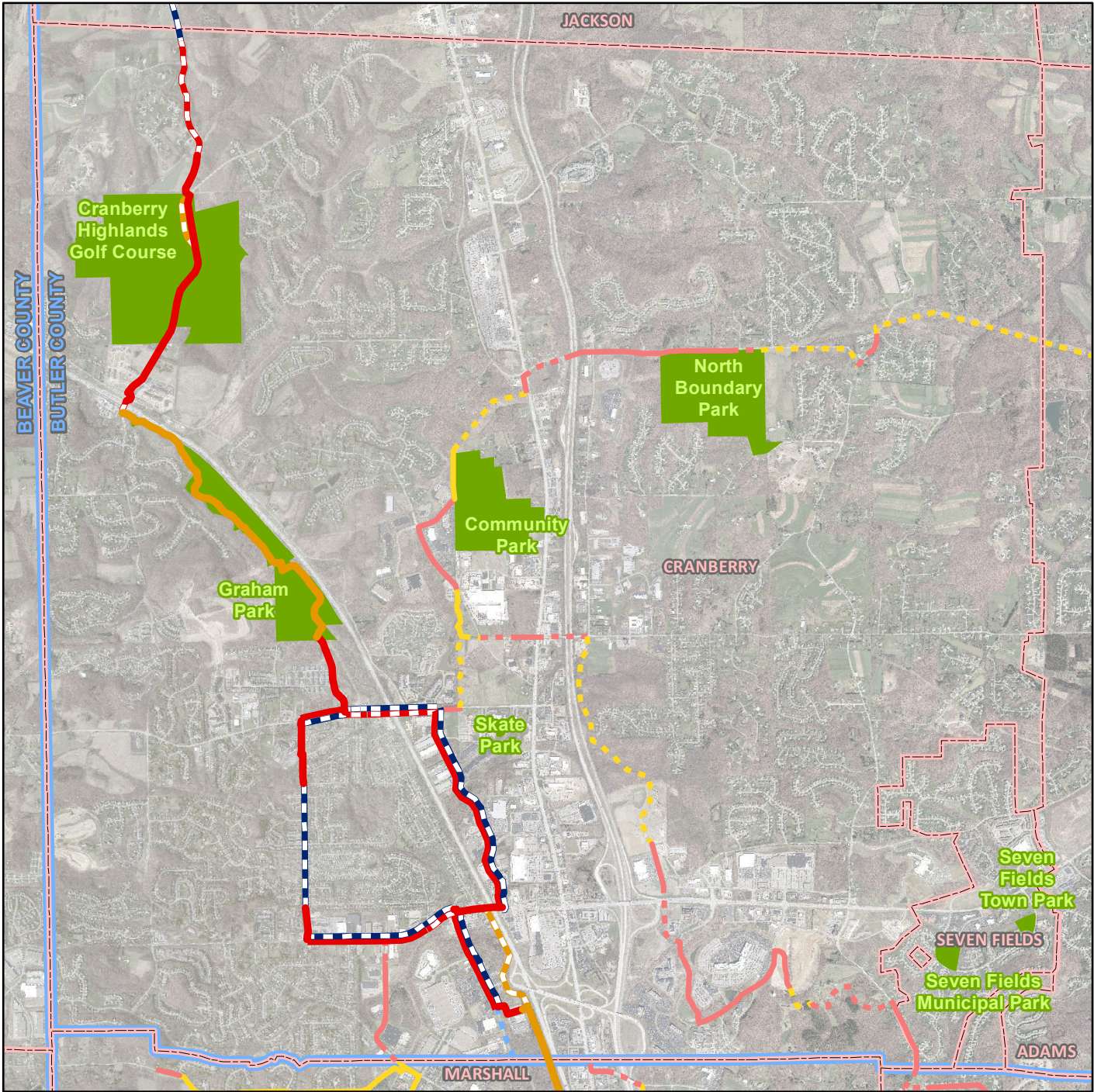
**5.1 miles of new  
sidewalks, trails,  
and in-road facilities**

## **SECONDARY**

**4.3 miles of completed  
sidewalks, trails,  
and in-road facilities**

**6.1 miles of new  
sidewalks, trails,  
and in-road facilities**

REGIONAL TRAIL CONCEPT: CRANBERRY TOWNSHIP



**Legend**

**Primary Route**

- Existing Trail
- Existing Sidewalk
- Existing In-Road
- Existing Sidewalk, Proposed In-Road
- Proposed Trail
- Proposed Sidewalk
- Proposed In-Road
- Proposed Sidewalk and In-Road
- Other Proposed

**Secondary Route**

- Existing, Sidewalk
- Existing, Trail
- Existing, In-Road
- Proposed, Sidewalk
- Proposed, Trail
- Proposed, In-Road
- Rachel Carson Trail
- Existing North Park Trail
- Proposed North Park Trail
- Parks
- Municipal Boundaries
- County Boundaries

# Jackson Township, Butler County



Jackson Township, located in Butler County, is called home by 3,808 residents. Since 2014, the Township has and is expected to grow at an average rate of 70 or more homes per year. The Township, and its neighbors Zelienople Borough and Harmony Borough, have a variety of existing and planned destinations that would benefit from enhanced pedestrian connections.

From the historical downtown of Harmony, to the Connoquenessing Creek and Scholars Run, to the Seneca Valley High School, downtown Zelienople, and the Route 528 Park and Ride, the construction of sidewalks and trails would provide alternatives to accessing destinations by car. Linking to areas such as Porter’s Cove and the Zelienople Reservoir will connect people to recreational opportunities, including kayaking and canoeing.

The Township’s Comprehensive Plan and Comprehensive Parks, Recreation, and Open Space Plan outlines the importance of developing of regional trail connections. The development of sidewalk and trail projects within Jackson Township and along The Commodore Perry Regional Trail will strengthen the active transportation network while providing additional mobility options. 5.8 miles of new trails and bikeways in Zelienople and Harmony will connect the CPRT to the Connoquenessing Creek Nature Preserve and the Zelienople Community Park.

## CPRT

1.1 miles of completed  
sidewalks, trails,  
and in-road facilities

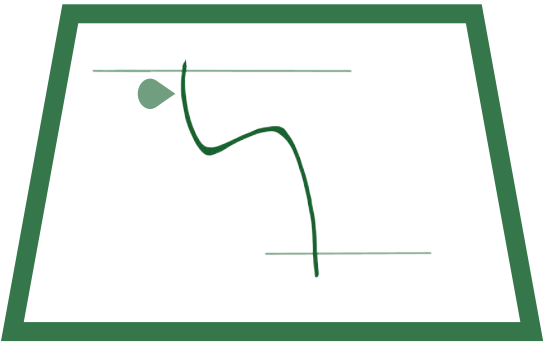
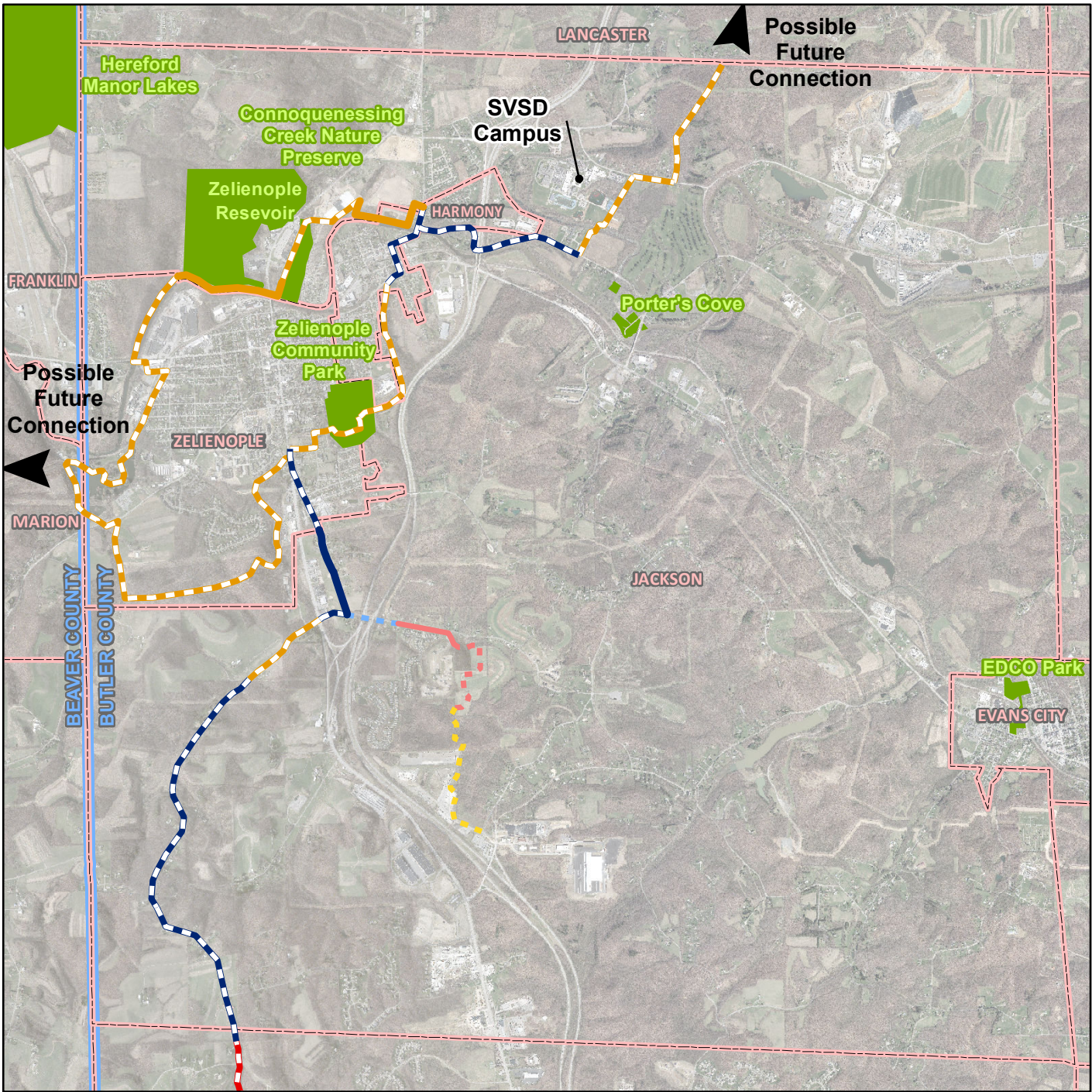
6.2 miles of new  
sidewalks, trails,  
and in-road facilities

## SECONDARY

.3 miles of completed  
sidewalks, trails,  
and in-road facilities

1.6 miles of new  
sidewalks, trails,  
and in-road facilities

REGIONAL TRAIL CONCEPT: JACKSON TOWNSHIP



**Legend**

Possible Future Connections

**Primary Route**

- Existing Trail
- Existing Sidewalk
- Existing In-Road
- Existing Sidewalk, Proposed In-Road
- Proposed Trail
- Proposed Sidewalk
- Proposed In-Road
- Proposed Sidewalk and In-Road
- Other Proposed

**Secondary Route**

- Existing, Sidewalk
- Existing, Trail
- Existing, In-Road
- Proposed, Sidewalk
- Proposed, Trail
- Proposed, In-Road
- Rachel Carson Trail
- Existing North Park Trail
- Proposed North Park Trail
- Parks
- Municipal Boundaries
- County Boundaries



**NEXT STEPS**



## Conclusion.

The Commodore Perry Regional Trail Master Plan is long-range in nature and far reaching in scope. The implementation of the gaps highlighted along the trail system will strengthen the active transportation networks in each community and the region at large. As the sidewalks, trails, in-road facilities, and bikeways are strategically constructed, each municipality will see an immediate benefit with people becoming more and more connected to local recreational, commercial, and residential destinations.

This plan outlines a path forward, to creating a regional network that efficiently maximizes existing infrastructure while proposing new projects that, when constructed, will fill in missing links along the trail system.

While this plan centered on five neighboring municipalities, opportunities to collaborate with supportive communities, non-profits, and other entities to further enhance and expand The Commodore Perry Regional Trail would be welcomed. Continuing to communicate, collaborate, and design with each other will be an important strategy to developing a high-quality active transportation network for each community, their residents, and the region at large.

Over time, by consistently and methodically implementing the projects outlined in this plan, the vision of The Commodore Perry Regional Trail Master Plan will be realized. People will be connected to places. Neighbors will be connected to neighbors. Access to regional amenities that once seemed impractical, will in time, become a reality.



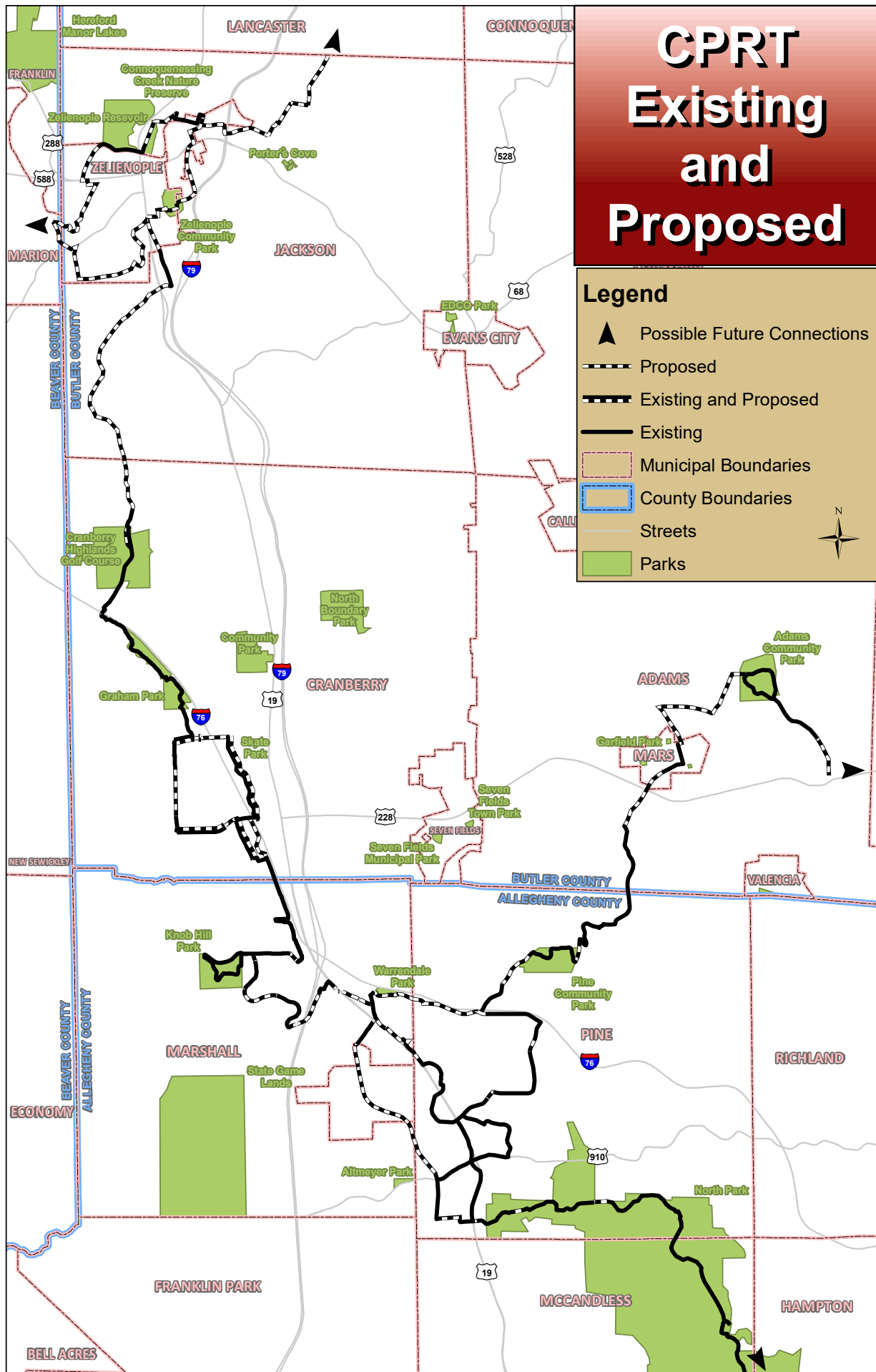
## APPENDIX

## REGIONAL TRAIL GAP PRIORITIZATION- PRIMARY NETWORK

No.	Project Scope	Length (ft.)	Material and Type	Priority Status	Feasibility
<b>Township of Pine</b>					
1	Pine Park to Treeline Drive	1,500	Asphalt Trail	High	Medium
2	English Road Trail	1,000	Asphalt Trail	High	High
3	Beaver Court Trail to Pine Park	3,000	Asphalt Trail	High	Medium
4	Harmony Trail to Brooktree	1,000	Wooded trail	High	High
5	Route 19 Sidewalk	700	Sidewalk	Medium	High
6	Wallace Road to English Road	800	Mixed sidewalk/Trail	Medium	Medium
7	Lake Drive to North Park	400	Sidewalk	Low	High
9	Warrendale Road Connector	4,000	Trail or Sidewalk	Low	Low
10	Old Harmony Rail Line	3,000	Gravel Trail	Low	Low
<b>Marshall Township</b>					
1	Warrendale Connection- West	2,371	Paint/Signage	High	High
2	Warrendale Connection- Center	1,104	Paint/Signage/Sidewalk/Trail	High	High
3	Altmyer Connection	346	Sidewalk	High	High
4	Shenot Road	2,751	Sidewalk/Trail	High	High
5	Warrendale Connection- East	1,310	Trail	Medium	High
6	Harmony Trail	2,402	Trail	Medium	High
<b>Adams Township</b>					
1	Three Degree Road from Adams Park to Mars High School	2,950	Trail	High	High
2	Connector from Treesdale to Route 228	2,775	Trail	High	High
3	Connector from Adams Park to Mars Borough	15,140	Trail	Medium	Medium
4	Three Degree Road south from 228 to Valencia Borough	5,350	Trail	Low	Low
<b>Cranberry Township</b>					
1	Haine School Road, from Freedom Road to Dover Drive	3,270	In road/enhanced shoulder	High	High
2	Rochester Road, from 2620 to Bellevue Commons	250	Concrete sidewalk	High	Medium
3	Freshcorn Road, from Kingston Ave to Jackson Twp	3,110	Concrete sidewalk	High	Medium
4	Freshcorn Road trail through Cranberry Highlands	1,505	Asphalt or gravel trail	Medium	High
5	Rochester Road, from Norman Drive to 2616 Rochester Road	1,720	Concrete sidewalk	High	Low
6	Powell Road, from Graham Park to Glen Eden Roundabout	325	Concrete sidewalk	High	Low
7	Freedom Road, from McIntyre Lane to Haldeman Drive	800	Concrete sidewalk	High	Low
8	Brush Creek Trail, Thorn Hill Industrial Park	3,085	Asphalt or gravel trail	Low	Low
9	Commonwealth Drive, from Marshall Township to Freedom Rd	4,185	Bike lane	Low	High
10	Freedom Road, from Commonwealth Drive to Haine School Rd	4,050	Bike lane	High	Low
11	Executive Drive, from Freedom Road to Rochester Road	5,485	Bike lane	High	Medium
12	Rochester Road, from Executive Drive to Haine School Road	3,435	Bike lane	High	Low
<b>Jackson Township</b>					
1	Zelienople Reservoir Property Connection. Harmony Trail to SR 19.	3,800	Trail	High	High
2	Wild Waterways Trail- west of 19. Along Connoquenessing, west of SR 19.	2,640	Trail	High	Medium
3	Park and Ride to Zelienople Trail. 528 Park and Ride to Zelienople Line on Perry Way and to SR 19 at Tollgate School Rd.	10,560	3,960 Bike lane; 6,600 Trail	High	High
4	Gudekunst Road Connection. SR 19 through expected PRD Development.	3,168	Trail	High	High
5	Evergreen Mill Road Bike Lane	7,285	Bike Lane	Medium	Medium
6	Gudekunst PRD to Cranberry	11, 616	Bike Lane	Medium	Medium
7	Seneca Valley Campus to Evergreen Mill Road	1,320	Trail	Medium	Low













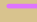


## REGIONAL TRAIL GAP PRIORITIZATION- SECONDARY NETWORK

No.	Project Scope	Length (ft.)	Type
<b>Township of Pine</b>			
1	Dean Road to Warrendale Road	2,162	Trail
2	From Pine Crest Court to open space	2,654	Trail
3	Pearce Mill Road, from Pine Park Drive south	1,720	Trail
4	Franklin Road and Mount Pleasant Road, from Butler County line to 824 Mount Pleasant Road	1,156	Sidewalk
5	Warrendale Road, from Pine-Richland High School to East Ridge Drive	2,157	Sidewalk
6	From Pearce Mill Road to open space	1,630	Sidewalk
<b>Marshall Township</b>			
1	Harmony Trail, from Franklin Park to Bradford Woods	4,814	Trail
2	Route 910, from Mingo Road to Altmeyer Park	6,138	Trail
3	Route 910, from Franklin Park to 202 Devine Drive	429	Sidewalk
4	Mingo Road, from State Gamelands Road to 5209 Wexford Run Road	6,924	Trail
5	Trail from Warrendale Bayne Road to Wexford Run Road	3,501	Trail
6	Mt Pleasant Road, from Penticon Lane to Warrendale Park	829	Trail
7	Freeport Road, from Dutilh Road to Venango Trail	967	Sidewalk
8	Route 19, from Freeport to Cranberry Township	285	Sidewalk
9	Mingo Road, from Marshall Heights Drive to 140 Mingo Road	3,037	Trail
10	Mingo Road, from 140 Mingo Road to State Gamelands Road	1,393	In-Road
11	Thorn Hill Road, from Cranberry Township to Woodland Road	121	Sidewalk
12	Thorn Hill Road, from Woodland Road to 500 Keystone Drive	333	Trail
<b>Adams Township</b>			
1	Forsyth Road to Cranberry Township	9,490	Trail
2	Three Degree Road, from Route 228 to Valencia	5,738	Trail
3	Hutchman Road to Forsyth Road	5,949	Trail
<b>Cranberry Township</b>			
1	20515 Route 19, from Rochester Road to Progress Avenue	2,402	Trail
2	Ogle View Road, from Unionville to 20581 Route 19	1,007	Sidewalk
3	Rowan Road, from Route 19 to Marshall Road	1,320	Sidewalk
4	Rowan Road to Clear Springgs Drive	6,395	Trail
5	MSA Thruway, from Cranberry Springs Drive to Cranbery Woods Drive	1,669	Sidewalk
6	Pendleton Way to Laurel Point	899	Trail
7	Laurel Point to Franklin Road	2,948	Sidewalk
8	Unionville Road, 66A Progress Ave to 65 Progress Ave	128	Sidewalk
9	ROW, from Community Park to Route 19	2,529	Trail
10	Route 19, from trail ROW to 4501 Glen Eden Road	170	Sidewalk
11	North Boundary Road, from Route 19 to 1019 North Boundary Road	1,249	Sidewalk
12	North Boundary Road, from 100 North Boundary Park Drive to 9703 Goehring Road	754	Sidewalk
13	North Boundary Road, from 9703 Goehring Road to Franklin Road	2,748	Trail
14	Franklin Road, from North Boundary Road to Washington Farms	486	Sidewalk
15	Sage Court to Adams Township	4,630	Trail
16	Commonwealth Drive, from 765 to Marshall Township	1,479	In-Road
17	Thorn Hill Road, from 230 Thorn Hill Road to Freedom Road	651	Sidewalk
18	Thorn Hill Road, from Marshall Township to 100 Rolling Road	549	Sidewalk
<b>Jackson Township</b>			
1	Tollgate School Road, from Perry Way to 156 Tollgate School Road	1,366	In-Road
2	From development to Tollgate School Road	2,979	Sidewalk
3	From development to Route 528 Park & Ride	4,170	Trail



# CPRT: Primary Route

## Legend

-  Possible Future Connections
-  Existing Trail
-  Existing Sidewalk
-  Existing In-Road
-  Existing Sidewalk, Proposed In-Road
-  Proposed Trail
-  Proposed Sidewalk
-  Proposed In-Road
-  Proposed Sidewalk and In-Road
-  Other Proposed
-  Existing North Park Trail
-  Proposed North Park Trail
-  Rachel Carson Trail
-  Streets
-  Parks

